

# KAPA Library Quantification Kit Illumina® Platforms

KR0405 – v11.20

This Technical Data Sheet provides product information and a detailed protocol for the KAPA Library Quantification Kits for Illumina platforms.

This document applies to KAPA Library Quantification Kits for Illumina platforms (07960166001, 07960140001, 07960204001, 07960255001, 07960336001 and 07960298001), KAPA Library Quantification Primer and PCR mix Kits for Illumina platforms (07960441001, 07960484001, 07960522001, 07960727001 and 07960573001), KAPA Library Quantification Standards and Primer Kit for Illumina platforms (07960085001), KAPA Library Quantification Standards Kits for Illumina platforms (07960409001, and 07960409001), KAPA Library Quantification Dilution Control Kit for Illumina platforms (07960417001), and KAPA Library Quantification Primer Kit for Illumina platforms (07960093001).

## Contents

<b>Product Description</b> .....	2
<b>Product Applications</b> .....	2
<b>Product Compatibility</b> .....	2
<b>Product Specifications</b> .....	2
Shipping and Storage .....	2
Handling .....	2
Quality Control .....	2
<b>Safety Information</b> .....	3
Precautions .....	3
Waste handling .....	3
<b>Important Parameters</b> .....	3
Accurate Liquid Handling .....	3
Sample Concentration and Dilutions .....	3
Sample Quality .....	3
Contamination and No-template Controls .....	3
Reaction Volume .....	4
Internal Controls .....	4
Replicates, Data Reliability, Throughput, and Per-sample Cost .....	4
Assay Automation .....	5
<b>Process Workflow</b> .....	6
<b>Detailed Protocol</b> .....	7
Data Analysis and Interpretation .....	10
Restrictions and Liabilities .....	13
Note to Purchaser: Limited Product Warranty .....	13
Note to Purchaser: Limited License .....	13

Kapa/Roche Kit Codes and Components	
<b>Complete Kit with:</b> DNA Standards 1 – 6 (80 µL each) Primer Mix (0.2 mL) KAPA SYBR® FAST qPCR Master Mix (1 mL)	<b>KK4828 – 07960166001</b> Universal qPCR Master Mix 200 µL ROX High (50X) and ROX Low (50X) supplied separately
<b>Complete Kits with:</b> DNA Standards 1 – 6 (80 µL each) Primer Mix (1 mL) KAPA SYBR® FAST qPCR Master Mix (5 mL)*	<b>KK4824 – 07960140001</b> Universal qPCR Master Mix 200 µL ROX High (50X) and ROX Low (50X) supplied separately
	<b>KK4835 – 07960204001</b> ABI Prism™ qPCR Master Mix
	<b>KK4844 – 07960255001</b> Bio-Rad iCycler™ qPCR Master Mix
	<b>KK4873 – 07960336001</b> ROX Low qPCR Master Mix
	<b>KK4854 – 07960298001</b> qPCR Master Mix optimized for LightCycler® 480
<b>Kits with:</b> Primer Mix (1 mL) KAPA SYBR FAST qPCR Master Mix (5 mL)*	<b>KK4923 – 07960441001</b> Universal qPCR Master Mix 200 µL ROX High (50X) and ROX Low (50X) supplied separately
	<b>KK4933 – 07960484001</b> ABI Prism qPCR Master Mix
	<b>KK4943 – 07960522001</b> Bio-Rad iCycler qPCR Master Mix
	<b>KK4973 – 07960727001</b> ROX Low qPCR Master Mix
	<b>KK4953 – 07960573001</b> qPCR Master Mix optimized for LightCycler 480
<b>Kit with:</b> Primer Mix (1 mL) DNA Standards (80 µL)	<b>KK4808 – 07960085001</b> DNA Standards 1 – 6
<b>Kits with:</b> DNA Standards (80 µL)	<b>KK4903 – 07960387001</b> DNA Standards 1 – 6
	<b>KK4905 – 07960409001</b> DNA Standards 0 – 6
<b>Kit with:</b> Dilution Control (80 µL)	<b>KK4906 – 07960417001</b> DNA Standard 0
<b>Kit with:</b> Primer Mix (1 mL)	<b>KK4809 – 07960093001</b>

\*Kits with passive reference dye incorporated in the qPCR mix: ABI Prism kits (ROX High), ROX Low kits (ROX Low), Bio-Rad iCycler kits (fluorescein).

## Quick Notes

- The DNA Standards provided in the kit represent a 10-fold dilution series (20 pM to 0.0002 pM).
- Ensure that the libraries to be quantified are compatible with the qPCR quantification primer sequences given on the next page.
- Select the correct version of KAPA SYBR FAST qPCR Master Mix for the qPCR instrument to be used.
- Refer to the **KAPA Library Quantification Technical Guide** for a more in-depth discussion of the various factors affecting accurate library quantification.

## Product Description

KAPA Library Quantification Kits for Illumina platforms provide all the reagents needed for absolute, qPCR-based quantification of Illumina libraries flanked by the P5 and P7 flow cell oligo sequences. Kits contain:

- Library Quantification DNA Standards 1 – 6 (a 10-fold dilution series of a linear, 452 bp template)
- Library Quantification Primer Premix (10X), containing the following primers:  
Primer 1: 5'-AAT GAT ACG GCG ACC ACC GA-3'  
Primer 2: 5'-CAA GCA GAA GAC GGC ATA CGA-3'
- KAPA SYBR® FAST qPCR Master Mix (2X), available with various passive reference dyes (Table 1).

Library quantification is performed by amplifying the set of six pre-diluted DNA Standards and diluted library samples by qPCR, using the KAPA SYBR FAST qPCR Master Mix and primers targeting the Illumina P5 and P7 flow cell oligo sequences. The average C<sub>q</sub> score for each DNA Standard is plotted against log<sub>10</sub>(concentration in pM) to generate a standard curve. The concentrations of diluted library samples are then calculated against the standard curve, using absolute quantification.

KAPA Library Quantification Kits are rigorously tested to ensure minimal lot-to-lot variation. The kit contains the novel KAPA SYBR FAST DNA Polymerase, engineered through a process of directed evolution for high-performance SYBR Green I-based qPCR. The ability of the engineered polymerase to amplify diverse DNA fragments with similar efficiency enables the use of a universal standard for the reliable quantification of all Illumina libraries with an average fragment length of up to 1 kb, irrespective of library type or GC content.

KAPA SYBR FAST is an antibody-mediated hot start DNA polymerase formulation. KAPA Library Quantification Kits are therefore suitable for use with automated liquid handling systems for high-throughput sample quantification.

## Product Applications

KAPA Library Quantification Kits for Illumina platforms are designed for the accurate and reproducible quantification of libraries prepared for Illumina sequencing. Any library with a concentration >0.0002 pM that contains sequences complementary to the primers in the Primer Premix (10X) can be quantified with the kit, irrespective of the library type, how it was constructed, or on which Illumina instrument it will be sequenced.

The kit supports quantification of libraries across a range of GC contents and average fragment lengths up to 1 kb.

In addition to NGS library quantification, the kit can also be used to detect library contamination in work spaces used during the preparation of Illumina libraries.

The KAPA Library Quantification assay consists of repetitive pipetting steps, which can easily be automated. The use of an automated liquid handling system is highly

recommended for high-throughput NGS pipelines. Please refer to the **KAPA Library Quantification Technical Guide** for more information.

## Product Compatibility

KAPA Library Quantification Kits for Illumina platforms are suitable for the quantification of any NGS library (prepared for Illumina sequencing) which contains the P5 and P7 flow cell sequence motifs. Libraries constructed using full-length universal or indexed TruSeq™ adapters can be quantified after adapter ligation. Libraries prepared with partial or stem-loop adapters can only be quantified with this kit after library amplification, during which indexes (and flow cell sequences) are added. To ensure compatibility, compare the adapter sequences used during library preparation with the library quantification primer sequences in **Product Description**.

Ensure that the correct KAPA SYBR FAST qPCR Master Mix is used, in accordance with the reference dye requirements (if any) of the qPCR instrument to be used for library quantification (Table 1).

## Product Specifications

### Shipping and Storage

KAPA Library Quantification Kits are shipped on dry ice or ice packs, depending on the destination country. Upon receipt, immediately store all components at -15°C to -25°C in a constant temperature freezer. When stored under these conditions and handled correctly, the kit components will retain full activity until the expiry date indicated on the kit label.

### Handling

Always ensure that components have been fully thawed and thoroughly mixed before use. The KAPA SYBR FAST qPCR Master Mix may not freeze solidly, even when stored at -15°C to -25°C.

The SYBR Green I dye (contained in the KAPA SYBR FAST qPCR Master Mix) and passive reference dyes are light sensitive. Exposure to direct light for an extended period of time will result in loss of fluorescent signal intensity.

All components of KAPA Library Quantification Kits, as well as the combined KAPA SYBR FAST/Primer Premix solution, are stable through 30 freeze-thaw cycles. Ensure that all reagents are stored protected from light at -15°C to -25°C when not in use. When protected from light, reagents are stable in the dark at 2°C to 8°C for long-term storage, and may be stored at this temperature for short-term use, provided that they do not become contaminated with microbes and/or nucleases.

### Quality Control

All kit components are subjected to stringent functional quality control, are free of detectable contaminating exo- and endonuclease activity, and meet strict requirements with respect to DNA contamination. Please contact Technical Support at [sequencing.roche.com/support](https://sequencing.roche.com/support) for more information.

## Safety Information

### Precautions

- Handle all samples as if potentially infectious, using safe laboratory procedures. As the sensitivity and titer of potential pathogens in the sample material can vary, the operator must optimize pathogen inactivation and follow the appropriate measures according to local safety regulations.
- Do not eat, drink, or smoke in the laboratory area.
- Do not pipette by mouth.
- Wear protective disposable gloves, laboratory coats, and eye protection, when handling samples and kit reagents.
- Wash hands thoroughly after handling samples and reagents.

### Waste handling

- Discard unused reagents and waste in accordance with country, federal, state, and local regulations.
- Safety Data Sheets (SDS) are available online on [dialog.roche.com](http://dialog.roche.com), or upon request from the local Roche office.

## Important Parameters

KAPA Library Quantification Kits enable accurate and reproducible qPCR-based quantification of libraries prepared for Illumina sequencing. Successful implementation of the assay in NGS workflows depends on a number of factors, which are discussed below. For more detailed information, please refer to the **KAPA Library Quantification Technical Guide** or contact Technical Support at [sequencing.roche.com/support](http://sequencing.roche.com/support).

### Accurate Liquid Handling

Since qPCR is a very sensitive technique, and the dynamic range of this assay extends to very low template copy numbers, the reliability of results is highly dependent on accurate liquid handling. Care must be taken to ensure the highest degree of accuracy when executing this protocol. This can be achieved as follows:

- Always ensure that reagents and samples are fully thawed and thoroughly mixed before use. After thawing and mixing, centrifuge tubes briefly to remove any droplets from tube walls.
- Concentrated solutions of DNA may be viscous, making it difficult to accurately dispense small volumes for analysis. Avoid making extremely large dilutions during sample preparation—see **Detailed Protocol** (step 2). If samples require very large dilutions to fall within the dynamic range of the assay, it is preferable to perform serial dilutions (e.g., make two consecutive 1:100 dilutions instead of a single 1:10,000 dilution).
- If possible, avoid the use of multi-channel pipettes.
- 

- Use a new pipette tip for each pipetting step, especially when dispensing the DNA Standards and when multiple dilutions of the same sample are prepared. Cross-contamination between standards and/or samples will affect the accuracy of quantification.
- Avoid placing the pipette tip too far under the reagent surface during aspiration, as this may result in liquid adhering to the outside of the tip.
- After aspirating the desired volume of any reaction component, examine the pipette tip before dispensing to ensure that the correct volume is being transferred.
- Always try to dispense reaction components as close as possible to the bottom of the tube or well.
- Flush/rinse pipette tips by pipetting up and down 2 – 3 times after dispensing.
- Ensure that no residual liquid remains in the tip after dispensing.

### Sample Concentration and Dilutions

Libraries and controls must be diluted to fall within the dynamic range of the assay, i.e., 20 – 0.0002 pM or 5.5 – 0.000055 pg/μL or  $12 \times 10^6$  –  $12 \times 10^1$  dsDNA molecules/μL. Any library dilution that amplifies before DNA Standard 1 should not be used in library concentration calculations. If only one dilution was included in the assay, it must be repeated with a more appropriate dilution of the library. If multiple dilutions were included, those that fall within the dynamic range of the assay can be used to quantify the library.

Library dilutions should be based on estimations from previous experience with libraries of the same type, or prepared using similar workflows, and/or on concentration information obtained with other methods during library construction and quality control (e.g., those employing NanoDrop™ Spectrophotometer, Qubit® assays or Bioanalyzer instrument). Refer to **Comparison with Other Quantification Methods** for more information.

### Sample Quality

Since dilute DNA degrades in an unbuffered environment, libraries and controls must be stored and diluted in a buffered solution, such as 10 mM Tris-HCl, pH 8.0 – 8.5 (25°C). Tween® 20 (0.05%) may be included in the dilution buffer to improve pipetting accuracy and reduce DNA adsorption to plastic tubes and pipette tips. Never dilute libraries or controls with water.

Prepare fresh dilutions for each assay and keep dilutions on ice during qPCR setup. Calculated library concentrations may be highly variable and/or inaccurate if diluted samples are stored at room temperature or for long periods of time (even at 4°C) prior to setting up qPCRs. If a sample has to be re-assayed, fresh dilutions should be prepared for the repeat assay.

## Contamination and No-template Controls

Observe good laboratory practice at all times to avoid contamination of work areas, reagents, consumables, and equipment with libraries, DNA Standards, or amplicons. It is highly recommended that no-template controls (NTCs) are included in each assay to detect contamination introduced during reaction setup. NTC qPCRs should return Cq scores that are at least 3 cycles later than the average Cq score for Standard 6.

Always dispense the DNA Standards from the lowest to the highest concentration (i.e., from DNA Standard 6 to DNA Standard 1) and use a fresh tip for each DNA Standard. Melt curve analysis of NTC reactions may be performed to confirm whether amplification is due to contamination with DNA Standard or library DNA, or due to primer-dimer formation.

Primer-dimer formation is not uncommon with this assay. This is due to primer design, which is not optimal for qPCR, but dictated by the Illumina flow cell oligo sequences. The cycling times used are also much longer than those used in typical qPCR with KAPA SYBR® FAST, further increasing chances of primer-dimer formation. As long as NTC amplification is at least 3 cycles after DNA Standard 6, primer-dimer formation should have no impact on kit performance.

## Reaction Volume

While this protocol specifies 20 µL reactions, volumes may be scaled down to 10 µL, if required. For improved accuracy, the volume of DNA Standards/library dilutions should be kept at 4 µL, with 6 µL of KAPA SYBR® FAST qPCR Master Mix with Primer Premix. However, the amount of template (DNA Standard or diluted library) used per reaction may be scaled as required, provided that it can still be pipetted accurately. Always use the same volume of DNA Standard and diluted library. Ensure that plastic consumables, pipettes, and qPCR instruments are compatible with the reaction volume.

## Internal Controls

The dilution of concentrated library DNA to fall within the dynamic range of this assay represents the biggest risk to accurate quantification, particularly if libraries are very concentrated and large initial dilutions are required.

If more than one dilution of each library is assayed (and falls within the dynamic range of the standard curve), the  $\Delta Cq$  value for consecutive dilutions is a good indication of the reliability of calculated library concentrations as in **Working Example** (step 5). However,  $\Delta Cq$  values for serial dilutions of a library do not provide any indication of the accuracy of the initial dilution.

For this reason, we recommend including at least one appropriate internal process or dilution control in every assay. These include:

- KAPA Library Quantification Dilution Control (KK4906). This is a quality-controlled 200 pM solution of the same linear, 452 bp dsDNA fragment comprising the DNA Standards and is also referred to as DNA Standard 0.

- An Illumina library that has previously been quantified with the KAPA Library Quantification Kit and that has been sequenced successfully.
- PhiX, a control library supplied by Illumina.

To be most effective, the internal control should be processed in the same way as the libraries to be assayed, i.e., the same initial dilution and serial dilutions should be prepared, and replicate reactions set up with each dilution of the internal control. Each of the internal controls listed above have advantages and disadvantages:

- The KAPA Library Quantification Dilution Control (DNA Standard 0) is subject to the same rigorous quality control as the set of DNA Standards supplied in the KAPA Library Quantification Kit. Absolute concentration and minimal lot-to-lot variation is guaranteed. At 200 pM, however, DNA Standard 0 is more dilute than most Illumina libraries. If DNA Standard 0 is diluted to the same extent as the samples to be assayed, the Cq scores for the dilutions are therefore likely to be a few cycles higher than for the libraries. This is acceptable, as long as at least one of the dilutions of Standard 0 falls within the dynamic range of the assay. Please note that the KAPA Library Quantification Dilution Control (DNA Standard 0) is not suitable as a sequencing control, as it is a homogenous solution of a single species of dsDNA and not a library.
- An existing, previously sequenced library is a valuable internal control, as both qPCR-based concentration and cluster density data will be available for such a control. The biggest risk of this control is degradation of DNA quality over time, particularly if the same library is used repeatedly as an internal control. The best approach is to select one or more internal controls from a pool of recently prepared and sequenced libraries, which have been stored in a buffered solution at -15°C to -25°C, and have not been subjected to too many freeze-thaw cycles. Single-use aliquots of libraries can be prepared and stored at -15°C to -25°C for use as controls.
- The use of PhiX as an internal library quantification control has similar advantages as that of a previously sequenced library. However, PhiX is not recommended if only one internal control is included in a library quantification assay, due to reported batch-to-batch variation in the given concentration and average fragment length of different lots.

## **Replicates, Data Reliability, Throughput, and Per-sample Cost**

qPCR is an extremely sensitive measurement technique that is vulnerable to variation arising from a number of sources. Triplicate qPCRs are recommended for DNA Standards, library samples, and controls.

The number of replicates may be reduced to two in order to increase throughput and reduce per-sample cost. When selecting the best strategy for your workflow and throughput requirements, keep in mind that the reliability of data is inversely proportional to the number of replicates. Reducing the number of replicates increases the risk of having to re-assay libraries if reliable data was not obtained.

The risk of reducing the number of replicate qPCRs can be mitigated by designing workflows in such a way that at least two serial dilutions of each library are always assayed, provided that both of these dilutions fall within the dynamic range of the assay.

For high-throughput library construction pipelines, automated library quantification in 384-well format is highly recommended, as this offers the possibility of quantifying 96 libraries in triplicate in a single run, while reducing the per-sample cost by performing 10 µL qPCRs.

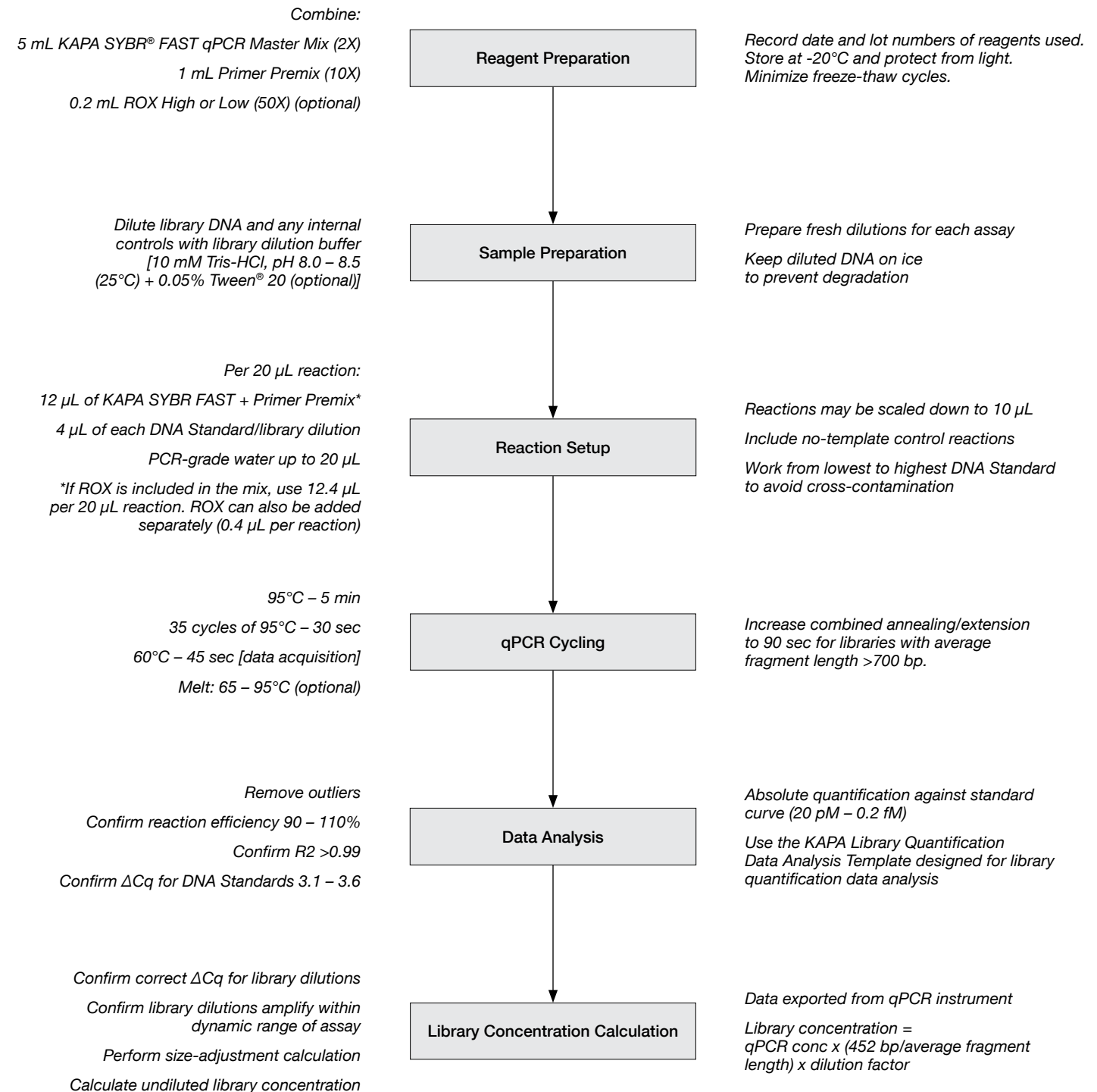
## **Assay Automation**

Library quantification with the KAPA Library Quantification Kit is amenable to automation and the use of automated liquid handling platforms is highly recommended for high-throughput library quantification workflows.

Pre-validated KAPA Library Quantification methods are available from selected suppliers of automated liquid handling platforms. For more information, please contact Technical Support at [sequencing.roche.com/support](https://sequencing.roche.com/support).



## Process Workflow



## Detailed Protocol

### 1. Reagent Preparation

- 1.1 Prepare an appropriate volume of DNA dilution buffer [10 mM Tris-HCl, pH 8.0 – 8.5 (25°C) + 0.05% Tween® 20 (optional)]. This buffer can be stored at room temperature or 4°C and re-used. Always equilibrate the buffer to room temperature before use.
- 1.2 Ensure that all components of the KAPA Library Quantification Kit are completely thawed and thoroughly mixed.
- 1.3 If the kit is used for the first time, add the Primer Premix (10X) (1 mL) to the bottle of KAPA SYBR® FAST qPCR Master Mix (2X) (5 mL). Mix thoroughly using a vortex mixer.

If you are using a Universal qPCR Master Mix kit and will only use ROX High or ROX Low, the appropriate ROX solution (50X) (0.2 mL) may be added to the qPCR Master Mix with primers when the kit is first opened. The volume of this mixture used per reaction should be adjusted accordingly (12.4 µL per 20 µL reaction or 6.2 µL per 10 µL reaction).

- 1.4 Record the lot numbers of all reagents, as well as the date on which the primers (and ROX) were added to the qPCR Master Mix. KAPA SYBR FAST qPCR Master Mixes with primers (and ROX) are stable through 30 freeze-thaw cycles, and should be stored protected from light at -20°C when not in use. Mixes may be stored in the dark at 4°C for ≤1 week, provided that they are not contaminated with microbes and/or nucleases during preparation or subsequent use in reaction setup.

### 2. Sample Preparation

- 2.1 Prepare the appropriate library dilutions (using DNA dilution buffer). Depending on the expected concentration of the library, 1:1,000 – 1:100,000 dilutions may be appropriate. At least one additional 2-fold dilution of each library is recommended.
- 2.2 Prepare the required internal control dilutions.

**Table 1. Recommended ROX concentrations for use with KAPA SYBR FAST Universal qPCR Master Mix**

Instrument	ROX
Applied Biosystems® 5700, 7000, 7300, 7700, 7900HT, StepOne™, and StepOnePlus™	ROX High
Applied Biosystems 7500, ViiA™7, QuantStudio™ 12K Flex; Agilent Mx3000P™, Mx3005P™, and Mx4000™	ROX Low
Analytik Jena qTOWER³; Bio Molecular Systems Mic qPCR Cycle; Bio-Rad CFX96, Chromo 4™ Real-Time Detector, DNA Engine Opticon™, MiniOpticon™, Opticon™ 2; Cepheid Smart Cycler®; Illumina Eco™; Mastercycler® ep realplex; Qiagen Rotor-Gene™ Q; Roche LightCycler® 1.x and 2.0; Roche LightCycler® 480; Roche LightCycler® Nano; TAKARA TP800 Thermal Cycler Dice™ Real Time System and ThermoFisher Scientific™ PikoReal™	No ROX

### 3. Reaction Setup and Cycling

- 3.1 Determine the total number of reactions that will be performed for the appropriate number of replicates of each of the following reactions:
  - six DNA Standards
  - each dilution of every library to be assayed
  - each dilution of every internal control
  - no-template controls (NTCs).
- 3.2 Prepare the required volume of master mix using the reaction setup recommended below.

#### Reaction setup: 20 µL reactions

For Universal qPCR Master Mix	ROX	No ROX
KAPA SYBR FAST qPCR Master Mix (2X) + Primer Premix (10X) <sup>1</sup>	12.0 µL	12.0 µL
ROX High or Low (50X) (see Table 1)	0.4 µL	0 µL
PCR-grade water	3.6 µL	4.0 µL
<b>Total volume:</b>	<b>16.0 µL</b>	<b>16.0 µL</b>

<sup>1</sup>If ROX was added to the qPCR Master Mix and primers, use 12.4 µL of the qPCR Master Mix with Primer Premix and ROX per reaction.

For ABI Prism™, Bio-Rad iCycler™, LightCycler 480 or ROX Low qPCR Master Mix	
KAPA SYBR FAST qPCR Master Mix (2X) + Primer Premix (10X)	12.0 µL
PCR-grade water	4.0 µL
<b>Total volume:</b>	<b>16.0 µL</b>

#### Reaction setup: 10 µL reactions

For Universal qPCR Master Mix	ROX	No ROX
KAPA SYBR® FAST qPCR Master Mix (2X) + Primer Premix (10X) <sup>1</sup>	6.0 µL	6.0 µL
50X ROX High or Low (see Table 1)	0.2 µL	0 µL
<b>Total volume:</b>	<b>6.2 µL</b>	<b>6.0 µL</b>

<sup>1</sup>If ROX was added to the qPCR Master Mix and primers, use 6.2 µL of the qPCR Master Mix with Primer Premix and ROX per reaction.

<sup>2</sup>The recommended reaction setup results in a total reaction volume of 10.2 µL if ROX is added during reaction setup. This does not impact performance.

For ABI Prism™, Bio-Rad iCycler™, LightCycler® 480 or ROX Low qPCR Master Mix	
KAPA SYBR FAST qPCR Master Mix (2X) + Primer Premix (10X)	6.0 µL
<b>Total volume:</b>	<b>6.0 µL</b>

- 3.3 Mix and briefly centrifuge the reagent master mix.
- 3.4 Dispense the appropriate volume of the master mix into each PCR tube or well.
- 3.5 Add 4 µL of PCR-grade water to all NTC well/tube(s).

- 3.6 Dispense 4 µL of each DNA Standard into the appropriate well/tube(s), working from the most dilute (Standard 6) to the most concentrated (Standard 1).
- 3.7 Dispense 4 µL of each dilution of libraries and internal controls to be assayed.
- 3.8 Cap tubes or seal the PCR plate, and transfer to the qPCR instrument.
- 3.9 Perform qPCR with the following cycling protocol, selecting the Absolute Quantification option in the instrument software. Adjust run parameters (e.g., reporters, reference dyes, gain settings, etc.) as required.

Step	Temp.	Duration	Cycles
Initial denaturation	95°C	5 min	1
Denaturation	95°C	30 sec	35
Annealing/Extension/ Data acquisition	60°C	45 sec <sup>1</sup>	
Melt curve analysis <sup>2</sup>	65 – 95°C		

<sup>1</sup>Increase to 90 sec for long-insert libraries (>700 bp).

<sup>2</sup>Optional; see **Data Analysis and Interpretation** (p. 9) for more details.

## 4. Data Analysis

**NOTE:** A working example of library quantification data analysis is provided in **Working Example** (step 5).

- 4.1 Annotate the DNA Standards as outlined below. Note that the specified values correspond to the concentrations of the DNA Standards, and not the final DNA concentration in each reaction. It is not necessary to convert these to the actual concentrations in the reaction, as long as the same volume of template (DNA Standard, diluted library or internal control) is used in all reactions.

DNA Standard 1	20 pM
DNA Standard 2	2 pM
DNA Standard 3	0.2 pM
DNA Standard 4	0.02 pM
DNA Standard 5	0.002 pM
DNA Standard 6	0.0002 pM

- 4.2 Review the background-subtracted (normalized) amplification curves and the Cq scores for replicate data points (DNA Standards, libraries and controls), and exclude obvious outliers. Replicate data points should differ by ≤0.2 cycles. If the data set contains many outliers, results are unlikely to be reliable. Repeat the assay with particular focus on improving pipetting accuracy.
- 4.3 Exclude all library dilutions that fall outside the dynamic range of the assay, i.e., that return an average Cq score lower than that of Standard 1 or higher than that of Standard 6. If all the dilutions of

a library fall outside the standard curve, re-quantify a more appropriate dilution of the library.

- 4.4 Use the instrument software to generate the standard curve. The standard curve may also be generated manually using the **KAPA Library Quantification Data Analysis Template**.
- 4.5 Review the standard curve to ensure that the following criteria are met:
  - The average  $\Delta Cq$  value between DNA Standards is in the range of 3.1 – 3.6.
  - The calculated reaction efficiency is in the range of 90 – 110% (i.e., the PCR product has increased 1.8- to 2.2-fold per cycle, and the slope of the standard curve is between -3.1 and -3.6).
  - $R^2 \geq 0.99$ .

If the standard curve does not meet these criteria, calculated library concentrations will not be reliable, and the assay must be repeated.

- 4.6 Most qPCR software will calculate the concentration of the library and control dilutions using absolute quantification against the standard curve. However, we recommend exporting qPCR data to the **KAPA Library Quantification Data Analysis Template** to perform the following calculations to determine the undiluted library concentration:

- Use the standard curve to convert the average Cq score for each dilution of every library and internal control that was assayed to average concentration (in pM).
- Calculate the average size-adjusted concentration (in pM) for each dilution of every library and control that was assayed, by multiplying the calculated average concentration with the following factor:

Size of DNA Standard in bp (452)

Average fragment length of library in bp

Please refer to **Data Analysis and Interpretation** (p. 9) for more information about the size-adjustment calculation.

- Multiply the average size-adjusted concentration calculated for each dilution of every library or control that was assayed with the appropriate dilution factor to calculate final concentration for the undiluted library or control from each of the dilutions assayed.
- 4.7 Review the final calculated concentrations and determine the working concentration for each sample to be used for downstream processing (e.g., pooling for target enrichment or cluster amplification).



## 5. Working Example

Three indexed DNA libraries were prepared from 250 ng of Covaris-sheared human genomic DNA using the KAPA LTP Library Preparation Kit, for 2 x 100 bp paired-end whole-genome shotgun sequencing on the Illumina HiSeq® 2500. Adapter-ligated libraries were size-selected (250 – 450 bp) and amplified (6 cycles). Amplified libraries were analyzed using an Agilent Bioanalyzer High Sensitivity DNA Assay to determine the average fragment size and approximate concentration of each library (Table 2, rows 1 and 2).

An initial 1:10,000 dilution and one additional 2-fold (i.e., 1:20,000) dilution of each library was prepared. As a process control, 1:10,000 and 1:20,000 dilutions of the KAPA Library Quantification Internal Control (Illumina DNA Standard 0, 200 pM) were also made. Samples were assayed using the KAPA Library Quantification Kit. All DNA Standards and library dilutions were assayed in triplicate, and triplicate NTCs were included.

The triplicate and average Cq scores for the six DNA Standards and NTCs are given in the following table.

DNA Standard	Conc (pM)	Cq score	Average Cq	ΔCq*
1	20	7.15	7.20	-
		7.22		
		7.23		
2	2	10.63	10.66	3.46
		<del>10.90</del>		
		10.69		
3	0.2	14.13	14.13	3.47
		14.12		
		14.13		
4	0.02	17.72	17.68	3.55
		17.65		
		17.66		
5	0.002	21.01	21.08	3.40
		21.14		
		21.08		
6	0.0002	<del>25.00</del>	24.44	3.36
		24.45		
		24.42		
NTC	N/A	34.5	>34	N/A
		ND		
		33.9		

\*Should be 3.1 – 3.6 for a 10-fold template dilution series.

After excluding outliers (>0.2 Ct difference) for DNA Standards 2 and 6, the standard curve was generated (Figure 1). The quality control metrics for the standard curve were as follows:

- ΔCq for all pairs of DNA Standards was within the specified range of 3.1 – 3.6.
- The reaction efficiency of 95% was within the specified range of 90 – 110%.
- The R2 value of 0.9999 met the specification of ≥0.99.

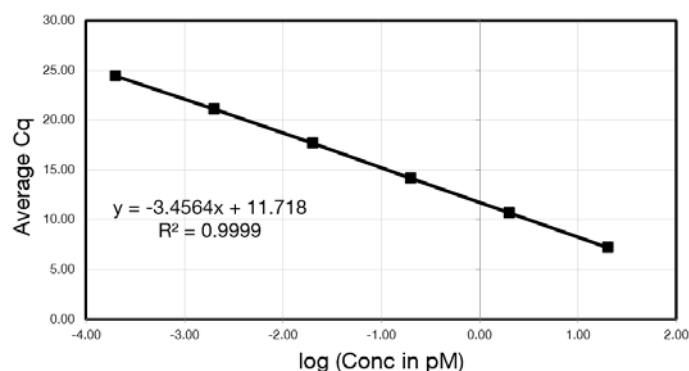


Figure 1. Standard curve generated with the KAPA Library Quantification Kit for Illumina sequencing platforms

Triplicate Cq scores for each dilution of the three libraries and internal control are given in Table 2, row 4. Outliers (>0.2 Ct difference) for the 1:20,000 dilution of Library 1 and the 1:10,000 dilution of Library 3 were excluded before the average Cq score (row 5) was calculated for each sample.

For an indication of the reliability of concentrations to be calculated, the ΔCq for the two dilutions of each library and the internal control was calculated. For consecutive 2-fold dilutions of a sample, a ΔCq of 1.0 is expected, and values between 0.9 and 1.1 are acceptable. This indicates that the concentration of a library calculated from two or more dilutions is likely to differ by <10%. If the ΔCq values for consecutive dilutions of a sample fall outside the acceptable range, indications are that quantification may not be reliable, as a result of poor liquid handling and/or sample contamination.

Next, the average Cq score for each library/control dilution was converted to concentration (in pM) using the standard curve (Table 2, row 7). The average size-adjusted concentration of each library dilution was subsequently calculated (as outlined in **Detailed Protocol** (step 4.6); Table 2, row 8). Finally, the average final concentration (in nM) of each undiluted library and the control was calculated from each of the dilutions that were assayed (Table 2, row 9). The calculated concentration of the internal control (205.4 pM and 207.8 pM, from the 1:10,000 and 1:20,000 dilutions, respectively) was within 10% of the given value, indicating that no gross errors occurred

Table 2. Working example of qPCR-based quantification of libraries prepared for Illumina sequencing

Row	Parameter	Library 1		Library 2		Library 3		Std 0 control	
1	Average fragment length (electrophoretic)	340 bp		335 bp		351 bp		452 bp	
2	Estimated concentration (other method)	17 ng/μL = 80.9 nM		18 ng/μL = 87.0 nM		27 ng/μL = 124.5 nM		200 pM (as supplied)	
3	Dilutions for qPCR	1:10K	1:20K	1:10K	1:20K	1:10K	1:20K	1:10K	1:20K
4	Triplicate Cq scores	9.24 9.25 9.21	10.21 10.12 <del>10.53</del>	8.79 8.84 8.88	9.79 9.81 9.94	8.30 <del>8.65</del> 8.34	9.40 9.22 9.26	17.50 17.58 17.57	18.53 18.62 18.57
5	Average Cq score	9.23	10.17	8.84	9.85	8.32	9.29	17.55	18.57
6	ΔCq	0.93		1.01		0.97		1.02	
7	Average concentration for sample dilution calculated using standard curve (pM)	5.23	2.81	6.82	3.48	9.62	5.03	0.021	0.010
8	Average size-adjusted concentration for library dilution (pM)	6.96	3.74	9.20	4.69	12.39	6.48	0.021	0.010
9	Average final calculated concentration of undiluted library dilution (nM)	69.6	74.8	92.0	93.9	123.9	129.5	0.205	0.208
10	Deviation between final concentrations calculated from different dilutions	7.5%		2.1%		4.6%		1.2%	
11	Working concentration	72.2 nM = 15.2 ng/μL		92.9 nM = 19.2 ng/μL		126.7 nM = 27.5 ng/μL		(206.6 pM)	

during sample dilution, or setup and execution of the assay.

To calculate the working concentration of each library, the variation between the two different dilutions was determined. Since calculated concentrations varied by <10% for all libraries, the average value of the two dilutions was selected as the working concentration. If the values differ by >10%, working concentrations should be based on one of the following:

- The average value from dilutions that returned final calculated concentration values that varied <10%.
- The final calculated concentration for the lowest dilution of each library that appears to be reliable.

## Data Analysis and Interpretation

### Early Amplification of DNA Standard 1

The concentration of DNA Standard 1 is much higher than that of samples that are typically analyzed by qPCR. As a result, DNA Standard 1 is amplified at a very early Cq. Most qPCR instruments establish a signal baseline during the first 3 – 15 cycles of the qPCR, and any increase in fluorescence during those cycles is interpreted as background. This can result in significant problems with the standard curve, since Standard 1 can be interpreted purely as background or its Cq score can be somewhat delayed. To avoid problems with DNA Standard 1, the cycles used for baseline/background subtraction should be manually adjusted to cycles 1 – 3.

### Size-adjustment Calculation

Size-adjustment must be performed to compensate for the difference in average fragment length between the library that was assayed and the DNA Standard. The fluorescent signal generated by SYBR® Green I is dependent on the total mass of DNA. Therefore, a longer amplicon at a lower concentration may produce the same amount of signal as a shorter amplicon at a higher concentration.

The size-adjustment calculation is a simple multiplication of the concentration derived from the standard curve with the ratio between the size of the DNA Standard (452 bp) and the average fragment size for that particular library (see **Detailed Protocol** and **Working Example**).

## Melt Curve Analysis

Melt curve analysis may be useful for the identification of carry-over adapter-dimer in Illumina libraries (Figure 2) and/or to identify contamination. The melt curves for the KAPA Library Quantification DNA Standard for Illumina platforms displays a characteristic double peak. This is the result of differential local melting in the 452 bp linear template and is not indicative of non-specific amplification.

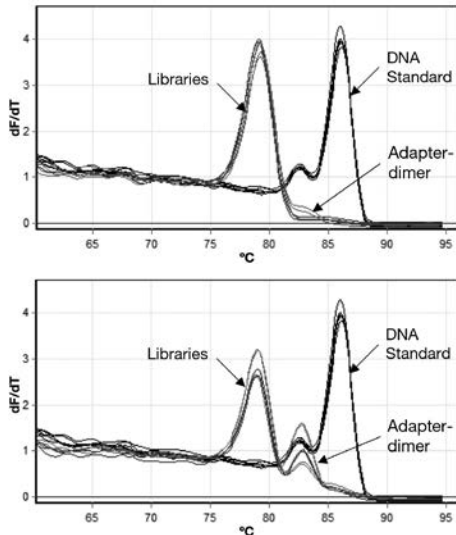


Figure 2. Melt curve analysis of libraries and DNA Standards amplified with the KAPA Library Quantification Kit for Illumina platforms. Libraries in the top panel contain no or a negligible amount of adapter-dimer. Libraries in the bottom panel contain an unacceptable amount of adapter-dimer, contributing to an inflated calculated library concentration. Note the characteristic double melt peak for the DNA Standard.

## Correlation between Library Concentration and Cluster Density

The KAPA Library Quantification Kit has become an integral part of Illumina sequencing workflows, in both low- and high-throughput environments. The assay is capable of yielding reproducible, accurate, and reliable results. The guidelines and instructions provided in this document, particularly in **Data Analysis** (step 4) and **Working Example** (step 5), should enable both new and experienced users to determine whether each data set generated with the assay is reliable. Since the metrics used to evaluate data cannot rule out gross errors in library dilutions, calculated library concentrations can only be accepted with confidence if an internal, process or dilution control was included in the assay.

Even if the result generated with the assay is determined to be reliable, there is no guarantee that libraries diluted for flow cell loading will yield an optimal number of clusters. Reasons for possible discrepancies between calculated library concentration and cluster density include:

- There are multiple liquid handling steps between library quantification and flow cell loading, all of which are prone to error.
- Cluster amplification is a complex process with many variables, some of which are instrument-related.

- qPCR-based quantification with the engineered KAPA SYBR FAST DNA Polymerase ensures that all the molecules in a complex DNA population are quantified with high efficiency, irrespective of fragment length or GC content. Cluster amplification (bridge PCR) is, however, performed with a different enzyme and is more challenging. Cluster generation may therefore not be equally efficient for all library fragments.
- Anecdotal evidence suggests that not all library types cluster similarly on a specific instrument and libraries of the same type do not yield the same number of clusters on different instruments of the same type when loaded at a specific concentration. Reasons for this fall outside the scope of this document. The SeqAnswers blog is an excellent resource for insightful NGS community forum discussions.

Ultimately, the correlation between library concentration determined with the KAPA Library Quantification Kit and cluster density must be determined empirically for your libraries, instrumentation, and workflows. To discover and define this correlation, it is important that the assay is performed meticulously and that data analysis and interpretation is performed correctly. If you are new to NGS and qPCR-based quantification, the following may be helpful:

- Assay different dilutions of a few libraries (preferably previously sequenced) on different days, to measure the reproducibility of qPCR data obtained. As indicated previously, fresh dilutions of test libraries used for this evaluation should be prepared for each assay. Variation of  $\leq 10\%$  in the concentration of a library calculated from different dilutions (within an assay) or in separate assays, is generally regarded as acceptable.
- Perform cluster amplification with the same set of test libraries, more than once, on the instrument(s) that will be used routinely. This is important to determine the variability of the cluster amplification process.
- Establish and maintain a database of library concentrations (determined with the KAPA Library Quantification Kit and any other quantification methods that are being used), as well as cluster density data generated for different library types and/or instruments. Data will enable you to define the correlation between calculated library concentration and cluster density for your specific situation and will also be invaluable for process optimization, quality control, and troubleshooting.

## Comparison with Other Quantification Methods

Most NGS workflows employ more than one library quantification method. Data generated with a NanoDrop™ spectrophotometer, a fluorometric (e.g., Qubit® or PicoGreen®) assay, or an electrophoretic device (e.g., a Bioanalyzer, TapeStation or LabChip® GX instrument) may be used to determine the most appropriate initial dilutions for accurate, qPCR-based quantification using the KAPA Library Quantification Kit. Theoretically, library concentrations determined with the Library Quantification Kit should always be similar to or lower than concentrations determined with spectrophotometric methods, which quantify total DNA, since qPCR measures only those molecules that can be amplified in PCR. However, when quantifying very concentrated or overamplified libraries, this may not be the case.

In over-amplified libraries, a large proportion of the DNA may be partially single-stranded due to substrate depletion and subsequent formation of heteroduplex molecules, which leads to severe underestimation of library concentrations when dsDNA-binding dyes are used. Conversely, library quantification by qPCR, involves denaturation of the entire library to single-stranded form, allowing accurate quantification of all PCR-competent molecules.

A detailed explanation and supporting data may be found in the **KAPA Library Quantification Technical Guide** – available upon request at [sequencing.roche.com/support](http://sequencing.roche.com/support).

## Troubleshooting

Symptom	Possible causes
Efficiency not in specified range (90 – 110%)	<ul style="list-style-type: none"> <li>• Efficiency above 100% may be indicative of contamination, where Standard 6 is &lt;3.1 cycles from Standard 5, and NTC reactions amplify less than 3 cycles from Standard 6. Examine melt curves to determine the source of contamination (Standard DNA or library DNA).</li> <li>• Baseline setting may delay Cq score for Standard 1, affecting efficiency. Adjust baseline manually.</li> <li>• Poor liquid handling.</li> </ul>
Poor R2 value (<0.99)	<ul style="list-style-type: none"> <li>• Poor liquid handling. Ensure that all reagents are thoroughly mixed before use.</li> <li>• Instrument-related issues. Ensure that the correct reference dye was used, at the correct concentration.</li> </ul>
Standards are not spaced correctly (3.1 – 3.6 cycles apart)	<ul style="list-style-type: none"> <li>• <math>\Delta Cq</math> of &lt;3.1 between DNA Standards 5 and 6 is indicative of contamination. Examine melt curves to determine whether contaminant is Standard or library DNA.</li> <li>• <math>\Delta Cq</math> of &lt;3.1 between DNA Standards 1 and 2 may be indicative of problems with background subtraction. Adjust the baseline manually.</li> <li>• <math>\Delta Cq</math> of &gt;3.6 points to poor reaction efficiency. Ensure that all reagents are thoroughly mixed before use. Confirm that all reaction components were added at the correct concentration, and that the correct cycling protocol was used.</li> <li>• Severe light exposure of KAPA SYBR® FAST qPCR Master Mix will reduce total fluorescence and may result in a delay of Cq scores, resulting in <math>\Delta Cq</math> values of &gt;3.6.</li> </ul>
Poor reproducibility between replicates	<ul style="list-style-type: none"> <li>• Poor liquid handling. Ensure that all reagents are thoroughly mixed before use.</li> <li>• Instrument-related issues. Ensure that the correct reference dye was used, at the correct concentration.</li> </ul>
$\Delta Cq$ of library dilutions is not within expected range (0.9 – 1.1 for 2-fold dilutions)	<ul style="list-style-type: none"> <li>• Poor liquid handling in preparation of library dilutions.</li> <li>• Library is challenging to amplify, i.e., extremely GC- or AT-rich, or has an average fragment length &gt;1 kb.</li> <li>• Library DNA has degraded. Prepare fresh dilutions and keep on ice during reaction setup.</li> </ul>
Concentrations calculated from different library dilutions differ by more than 10%	<ul style="list-style-type: none"> <li>• Poor liquid handling in preparation of library dilutions.</li> <li>• Library is challenging to amplify, i.e., extremely GC- or AT-rich, or has an average fragment length &gt;1 kb.</li> <li>• Library DNA has degraded. Prepare fresh dilutions and keep on ice during reaction setup.</li> </ul>
Library dilutions do not fall within dynamic range of standard curve	<ul style="list-style-type: none"> <li>• Dilutions that amplify before DNA Standard 1 should not be used. Use only those dilutions that fall within the range of the standard curve. If no such dilutions were assayed, repeat the assay with a more appropriate dilution factor.</li> <li>• Libraries that amplify after Standard 6 are unlikely to contain a significant amount of library DNA. Repeat the quantification to confirm the result.</li> </ul>
Standard 1 amplification plot appears abnormal	<ul style="list-style-type: none"> <li>• Instrument is subtracting early amplification as background. Adjust the baseline settings to use cycles before any signs of amplification (1 – 3).</li> </ul>
Standards amplify, but libraries do not, or very late amplification of libraries	<ul style="list-style-type: none"> <li>• Library does not contain the appropriate adapter sequences for quantification primers to bind to.</li> <li>• Gross error with initial dilution, or library DNA has degraded. Re-assay fresh dilutions.</li> </ul>

## Restrictions and Liabilities

This technical data sheet is provided “as is” and Kapa Biosystems assumes no responsibility for any typographical, technical, or other inaccuracies. The document is subject to being changed, without notice, in future editions.

To the maximum extent permitted by applicable law, Kapa Biosystems disclaims all warranties, either express or implied, with regard to this technical data sheet and any information contained herein, including but not limited to the implied warranties of merchantability and fitness for a particular purpose. Kapa Biosystems shall not be liable for errors or for incidental or consequential damages in connection with the furnishing, use, or performance of this document or of any information contained herein.

This document might contain references to third party sources of information, hardware or software, products, or services and/or third party web sites (collectively the “Third-Party Information”). Kapa Biosystems does not control, and is not responsible for, any Third-Party Information. The inclusion of Third-Party Information in this document does not imply endorsement by Kapa Biosystems of the Third-Party Information or the third party in any way.

Kapa Biosystems does not in any way guarantee or represent that you will obtain satisfactory results from using Kapa Biosystems products as described herein. The only warranties provided to you are included in the Limited Warranty enclosed with this document. You assume all risk in connection with your use of Kapa Biosystems products.

Kapa Biosystems is not responsible nor will be liable in any way for your use of any software or equipment that is not supplied by Kapa Biosystems in connection with your use of Kapa Biosystems products.

## Note to Purchaser: Limited Product Warranty

Any product that does not meet the performance standards stated in the product specification sheet will be replaced at no charge. This warranty limits our liability to the replacement of the product. No other warranties of any kind, express or implied, including without limitation, implied warranties of merchantability or fitness for a particular purpose, are provided by Kapa Biosystems. Kapa Biosystems shall have no liability for any direct, indirect, consequential or incidental damages arising out of the use, the results of use or the inability to use any product.

## Note to Purchaser: Limited License

KAPA Library Quantification Kits are developed, designed and sold exclusively for research purposes. Neither the product, nor any individual component, has been tested for use in diagnostics or for drug development, nor is it suitable for administration to humans or animals. Please refer to the SDS, which is available on request.

Certain applications of this product are covered by patents issued to parties other than Kapa Biosystems and applicable in certain countries. Purchase of this product does not include a license to perform any such applications. Users of this product may therefore be required to obtain a patent license depending upon the particular application and country in which the product is used.



**Manufacturing, R & D**  
Cape Town, South Africa  
Tel: +27 21 448 8200  
Fax: +27 21 448 6503

**Technical Support**  
[sequencing.roche.com/support](http://sequencing.roche.com/support)